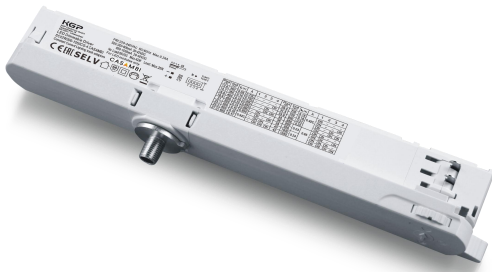


SC42W300-1050CG-4 CASAMBI

Constant Current Dimmable Driver

SC42W300-1050CG-4 CASAMBI



Model	Output Current	Input Current	Input Power	Output Power Range	PF	Efficiency	Output Voltage	No load Voltage
SC42W300-1050CG-4 CASAMBI	300mA	0.07A	15.4W	6.00-12.60W	0.7	82%	20-42V	55V
	350mA	0.08A	17.9W	7.00-14.70W	0.75	82%	20-42V	55V
	400mA	0.09A	20.5W	8.00-16.80W	0.85	82%	20-42V	55V
	450mA	0.10A	22.8W	9.00-18.90W	0.88	83%	20-42V	55V
	500mA	0.11A	25.3W	10.00-21.00W	0.89	83%	20-42V	55V
	550mA	0.12A	27.8W	11.00-23.10W	0.9	83%	20-42V	55V
	600mA	0.14A	30.4W	12.00-25.20W	0.92	83%	20-42V	55V
	650mA	0.15A	32.5W	13.0-27.30W	0.92	84%	20-42V	55V
	700mA	0.16A	35W	14.00-29.40W	0.92	84%	20-42V	55V
	750mA	0.17A	37.5W	15.00-31.50W	0.92	84%	20-42V	55V
	800mA	0.18A	40W	16.00-33.60W	0.92	84%	20-42V	55V
	850mA	0.18A	40W	17.0-34.00W	0.92	85%	20-40V	55V
	900mA	0.2A	42.4W	18.00-36.00W	0.92	85%	20-40V	55V
	950mA	0.2A	44.7W	19.00-38.00W	0.92	85%	20-40V	55V
	1000mA	0.23A	46.5W	20.00-40.00W	0.92	86%	20-40V	55V
1050mA	0.25A	48.8W	21.00-42.00W	0.92	86%	20-40V	55V	

* Test result @230V, 50Hz, Full Load.

1. Parameters

category	Item	Technical Norm
Features	Output Type	Constant Current
	Dimming Type	Bluetooth
	Dimming range	1%-100%
	Output Features	Isolation
	IP Grade	IP20
	Insulation Class	Class II
Input	Rated Input Voltage	220-240VAC
	Range of Input Voltage	176-264VAC or 176-280VDC
	Frequency	50/60Hz
	Input Current	≤0.28A (230VAC,full load)

SC42W300-1050CG-4 CASAMBI

	Input Power	≤48.8W (230VAC,full load)
	Power Factor	≥0.92 (230VAC,full load)
	THD	≤20% (230VAC,full load)
	No-load Power Consumption	≤0.5W @230VAC
	Inrush Current	≤18A/2.8us (230VAC, full load)
	Connected quantity of 10A Breaker Connected quantity of 16A Breaker Connected quantity of 20A Breaker	11pcs/type A ; 17pcs/type B ; 28pcs/type C @ 230Vac 18pcs/type A; 27pcs/type B ; 44pcs/type C @ 230Vac 22pcs/type A; 33pcs/type B ; 55pcs/type C @ 230Vac
Output	Output Voltage Range	20-42VDC@300-800mA 20-40VDC@850-1050mA
	No Load Voltage	55VDC Max.
	Output Current	300mA -1050mA (Max. output)
	Max. Output Power	42W
	Efficiency	≥86% (230VAC, full load)
	Current Ripple	±5% (Imax-Imin)/(Imax+Imin)
	Current Accuracy	±5%
	Started Delay Time	≤0.5S (230VAC, full load)
Protection	Short Circuit Protection	Auto Recovery
	Overload Protection	Auto Recovery
	No-load Protection	Auto Recovery
	Insulation voltage	3000V 5mA 60S between P-S
	Insulation resistance	>100M ohm @ 500VDC
	Leakage current	< 250μA, I/P to O/P or I/P to PE @230V input
Environment	Ta/Operation Temperature	-20...+35°C
	Ts/Storage Temperature	-40...+85°C
	Tc/Enclosure Temperature	85°C
	Humidity	10%....90%RH
	Atmospheric pressure	86-108KPa
Construction	Connection Method	Push-in Terminal
	Installation	Independent
	PRI Wire preparation	0.75-1.5 [□]
	SEC Wire preparation	0.5-1.5 [□]
	Dimension	250 x 31 x 45mm (L*W*H)
Standards	Certification	CE
	Safety Standards	EN61347-1:2015,EN61347-2-13:2014/A1:2017
	EMC Standards	EN55015:2013/A1:2015,EN61000-3-2:2014, EN61000-3-3:2013,EN61547:2009
	Performance	EN62384
	Surge	L-N/2KV
Others	RoHS	complied to 2011/65/EU
	Life Time	50000h @Ta/ Tc

SC42W300-1050CG-4 CASAMBI

Warranty	5years , F.R. < 10000ppm
----------	--------------------------

Remark:

- 1.All Parameters, if not specified, are measured at 230VAC/50Hz and 25°C ambient temperature.
- 2.LED Driver is a component of the luminaires, Luminaires and wire layout will affect the EMC, please check the EMC with end products again.

2. Output Current Setting

Output Current	1	2	3	4
300mA	-	-	-	-
350mA	-	-	-	ON
400mA	-	-	ON	-
450mA	-	-	ON	ON
500mA	-	ON	-	-
550mA	-	ON	-	ON
600mA	-	ON	ON	-
650mA	-	ON	ON	ON
700mA	ON	-	-	-
750mA	ON	-	-	ON
800mA	ON	-	ON	-
850mA	ON	-	ON	ON
900mA	ON	ON	-	-
950mA	ON	ON	-	ON
1000mA	ON	ON	ON	-
1050mA	ON	ON	ON	ON

3. Label

KGP
KGP Electronics GmbH
Hueselstraße 19
DE-58511 Lüdenscheid

LED Dimmable Driver
SC42W300-1050CG-4 CASAMBI
Constant Current Lighting track adaptors

CASAMBI

PRI:220-240VAC 50/60Hz Max.0.24A
SEC:300-800mA 20-42VDC
850-1050mA 20-40VDC

No Load:55VDC Max.42W Load: Max.25N
For LED modules only

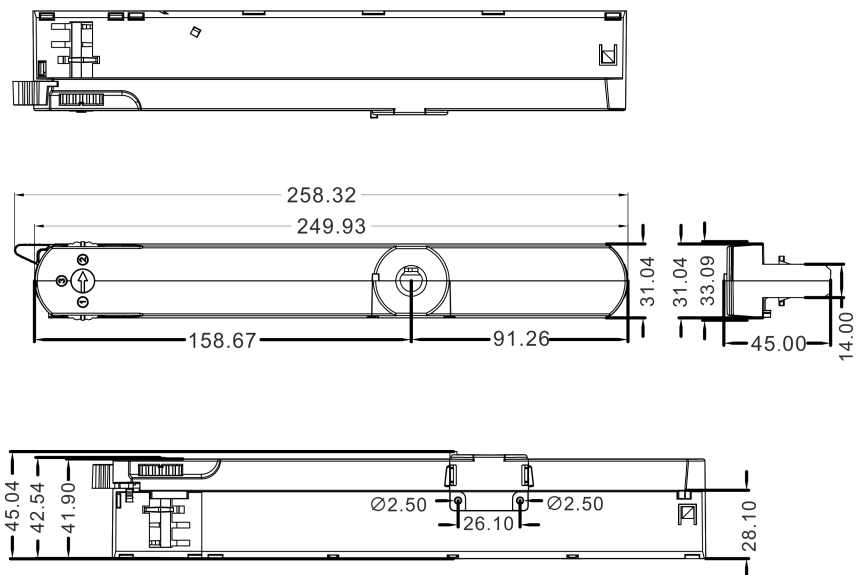
0.5-1.5
6-9mm

tc ● Tc98°C
Ta35°C

1 2 3 4 OFF

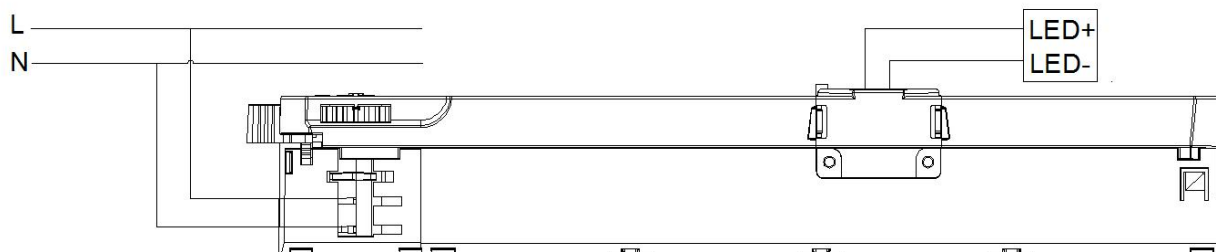
Pout [W]	Iout [mA]	Iv [A]	λ	1	2	3	4	Pout [W]	Iout [mA]	Iv [A]	λ	1	2	3	4
12.6	300	0.09	0.70	-	-	-	-	29.4	700	0.18	-	ON	-	-	-
14.7	350	0.10	0.75	-	-	-	ON	31.5	750	0.19	0.92	ON	-	-	ON
16.8	400	0.12	0.80	-	-	ON	-	33.6	800	0.21	-	ON	-	ON	-
18.9	450	0.13	0.85	-	-	ON	ON	34	850	0.22	-	ON	-	ON	ON
21	500	0.14	0.88	-	ON	-	-	36	900	-	0.23	ON	ON	-	-
23.1	550	0.15	0.90	-	ON	-	ON	38	950	-	0.24	ON	ON	-	ON
25.2	600	0.16	-	ON	ON	-	-	40	1000	-	-	ON	ON	ON	-
27.3	650	0.17	0.92	-	ON	ON	ON	42	1050	-	-	ON	ON	ON	ON

4. Dimension



SC42W300-1050CG-4 CASAMBI

5. Wiring Diagram



6. Packing information

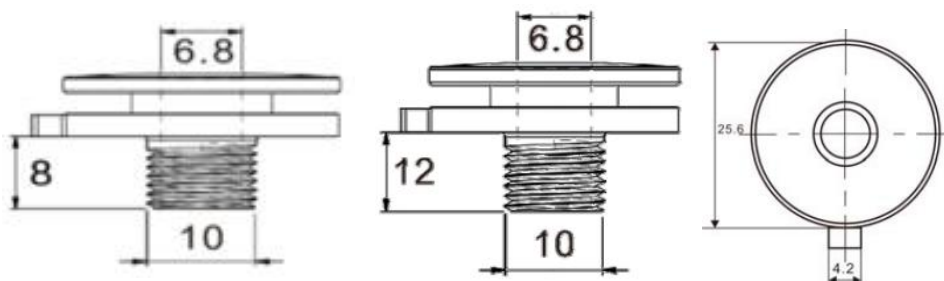
Packing way	Model	Article number	Colour	Carton L*W*H(mm)	Pcs/ Carton	Net weight/ Pcs(kg)	Net weight/ Carton(kg)	Gross weight/ Carton(kg)
industrial	SC42W300-1050CG-4W CASAMBI	118901W	White	515*274*370	90	0.16	14.4	17.85
	SC42W300-1050CG-4B CASAMBI	118901B	Black					
	SC42W300-1050CG-4G CASAMBI	118901G	Grey					

7. Lamp Screw Type

- Optional threaded sleeve for luminaire mounting
- Suitable for M10x1x8 threaded nut
- Additional mounting equipment, e.g. M10x1x12
- aluminium, black, white
- further on request

Ordering data

Type	Colour	Article number	Qty/ctn	Weight/pcs
M10x1x8	White	AC094306	1200	0.016
	Black	AC094307	1200	0.016
	Aluminium	AC094310	1200	0.016
M10x1x12	White	AC094308	900	0.017
	Black	AC094309	900	0.017
	Aluminium	AC094305	900	0.017



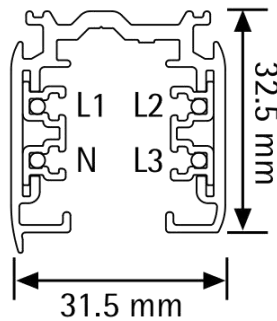
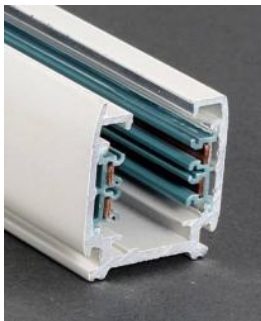
8. Suitable for following tracks

Serial number	Brand	Track model	System
1	Global	XTS 4 & XTSE 4	3P
2	Stucchi	9000XX Series	3P
3	Eutrac	2510x	3P
4	Unipro	T32B	3P
5	Ivela	7501	3P
6	ERCO	783	3P
7	Hoffmeister	/	3P

Remark:

1. The model name is XTS 4 and XTSE 4 tracks, and its brand is Global.
2. The model name used is the 9000XX track, and its brand is Stucchi. The “XX” in the model name represents: it represents a different color.
3. The model name is 2510x tracks, and its brand is Eutrac. The “x” in the model name represents: it represents a different color (x=1 white; x=2 black; x=3 silver, x=8 grey).
4. The model name is T32B tracks, and its brand is Unipro.
5. The model name is 7501 tracks, and its brand is Ivela.
6. The model name is 783 tracks, and its brand is ERCO.
7. Hoffmeister

9. Phase track light rail specification:



10. Lighting track adapter and rail system installation diagram:



The adaptor shall be given that the use is limited to the track system specified.

11. Wiring instructions

- All connections must be kept as short as possible to ensure good EMI behaviour
- Mains leads should be kept apart from LED Driver and other leads (ideally 5 – 10 cm distance)
- Advice the maximum length of output wires is 3 m
- Secondary switching is not permitted (Except for constant voltage)
- Incorrect wiring can damage LED modules.
- The wiring must be protected against short circuits to earth (sharp edged metals parts, metal cable clips, louver, etc.)